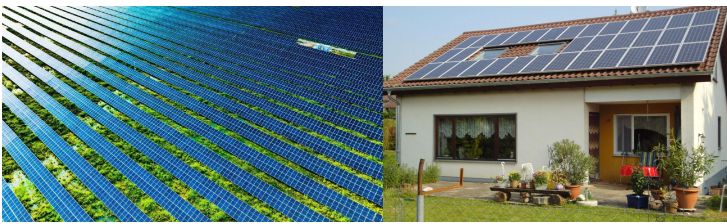


SOLAR CABLE PV1-F/H1Z2Z2-K



APPLICATION



A wire product designed specifically for photovoltaic applications, used to connect solar panels, inverters, and other devices.

CONDUCTOR



- ✓ Galvanized oxygen free copper
- ✓ Low resistance and low loss
- ✓ Antioxidation
- ✓ Stable conductivity



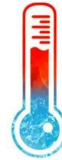
Safety



Flame
retardant



≥ 25 years
lifespan



-40°C~120°C



Ultraviolet-
proof



Corrosion
preventive

INSULATION & JACKET

125 °C low smoke halogen-free irradiated cross-linked polyolefin material: environmentally friendly material, high pressure resistance, fire retardant, UV radiation resistance, high temperature resistance, low temperature resistance, wind and sand resistance, rain and snow resistance.

TECHNICAL PARAMETER

NO. OF COND.: 1

COND. operating temperature: ≤90°C

COND. max temperature: 120°C

The max temperature of the conductor during a short circuit (not exceeding 5 seconds) 200°C

Laying environment temperature: -40°C~90°C

Bending radius: 4D

Color: Red, Blue, Black

PV1-F

Rated voltage: U0/U0.6/1kV

Max voltage of AC system: 1.2kV

Max voltage of DC system: 1.8kV

H1Z2Z2-K

Rated voltage: U0/U1/1kV

Max voltage of AC system: 1.5kV

Max voltage of DC system: 1.8kV

SOLAR CABLE PV1-F/H1Z2Z2-K

 SHENXING CABLE GROUP



Products can be customized according to customer needs

NO. OF COND.	DIA OF COND. mm	COND. SECTION mm ²	INSULATION THK mm	JACKET THK mm	OVERALL DIA mm	WEIGHT kg/km	RESISTANCE AT 20°C Ω/km	CURRENT RATING AT 60°C A		
								In air	On the surface	Two cables on the surface
Single	1.6	1.5	0.7	0.7	4.6	36	13.7	30	29	24
	2.0	2.5	0.7	0.7	5.0	46	8.21	41	39	33
	2.6	4	0.7	0.8	5.6	62	5.09	55	52	44
	3.2	6	0.8	0.8	6.1	82	3.39	70	67	57
	4.1	10	0.8	0.8	7.1	125	1.95	98	93	79
	5.5	16	0.9	0.9	8.5	190	1.24	132	125	107
	6.7	25	0.9	1.0	10.4	285	0.795	176	167	142
	8.2	35	0.9	1.1	11.5	385	0.565	218	207	176
	9.0	50	1.0	1.2	13.7	540	0.393	276	262	221
	10.8	70	1.1	1.2	15.8	740	0.277	347	330	278
	12.6	95	1.1	1.3	17.3	965	0.210	416	395	333
	14.3	120	1.2	1.3	19.1	1210	0.164	488	464	390
	15.9	150	1.4	1.4	21.4	1495	0.132	566	538	453
	17.5	185	1.6	1.6	24.9	1885	0.108	644	612	515
20.5	240	1.7	1.7	27.3	2395	0.082	775	736	620	

The above data is for reference only.